

# **Global Information System**

## **INTRODUCTION**

A global information system (GIS) integrates hardware, software, and data for capturing, managing, analyzing, and displaying all forms of geographically referenced information. GIS allows us to view, understand, question, interpret, and visualize data in many ways that reveal relationships, patterns, and trends in the form of maps, globes, reports, and charts. A GIS helps you answer questions and solve problems by looking at your data in a way that is quickly understood and easily shared. GIS technology can be integrated into any enterprise information system framework. Your organization has new and legacy data stored in a variety of formats in many locations. You need a way to integrate your data so that you can analyze it as a whole and leverage it to make critical business and planning decisions.

GIS can integrate and relate any data with a spatial component, regardless of the source of the data. For example, you can combine the location of mobile workers, located in real-time by GPS devices, in relation to customers' homes, located by address and derived from your customer database. GIS maps this data, giving dispatchers a visual tool to plan the best routes for mobile staff or send the closest worker to a customer. This saves tremendous time and money.

## **ABSTRACT**

The objective of the project is to provide the user easy capability to search one position in the world map like country, city name, place etc using GPRS or WEB SERVICE & J2ME technology from his mobile. This will help the users to locate our mobile; can access the road map of the place with the help of a web service from the mobiles having GPRS and J2ME technology. The Application gives the user, ability to locate or edit one position on the map manually via mobile phone. If a connection is established the user can access the world map from the web service. This also helps the

mobile users to search one position in the world map by giving Geographical position co-ordinates of the place.

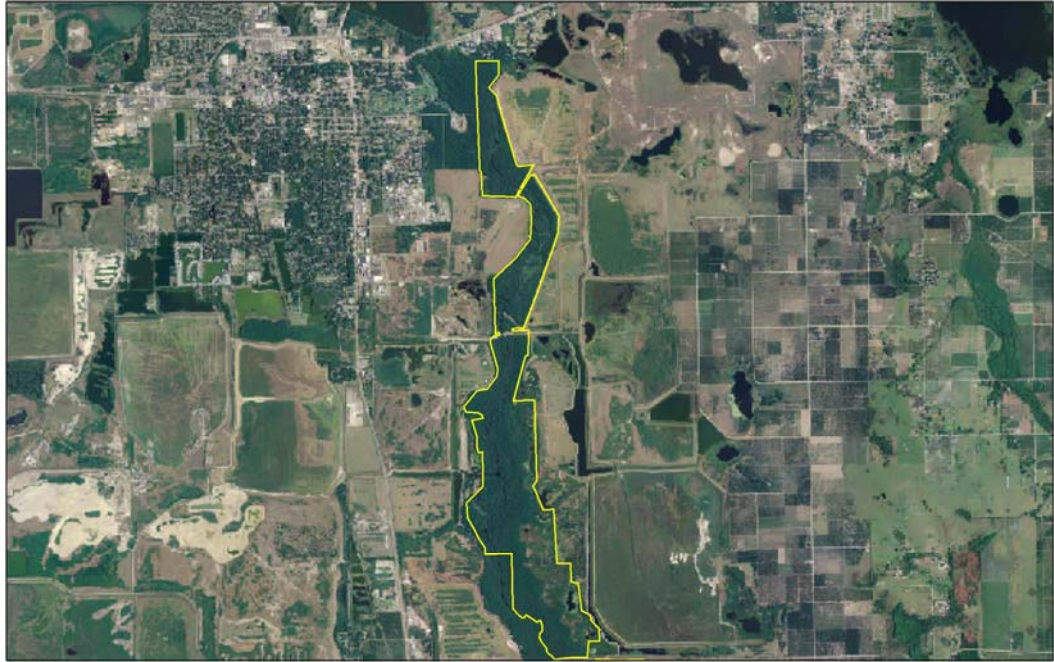
### **Aim**

1. This application is designed to provide the user easy capability to search one position in the world map like city name, place etc using a Web service.
2. This project is to enable the mobile users to search one position in the world map by giving Geographical position co-ordinates of the place.
3. This project is to enable the mobile users to record or map on position in the world map with the help of a web service from their mobile.
4. This application is also designed to provide the user easy capability to search the position of his or any mobile in the map using the Web service.
5. The application must consider the limitations of mobile devices.
6. The application must work properly without problems on all targeted devices.

### **Purpose**

The purpose of the project is to make an application to use the web service to search, locate and also provide the mobile users a service that facilitates them to access the world map on their Mobiles. The basic idea behind the project is to bridge the communication gap in the mobile phones. This type of service enhances the capabilities and features of mobile devices. With this type of service one can have a familiarization over the places in the map in addition to accessibility features.

## Coastal Settlement 4 Clear Springs



### **Applications**

GIS technology can be used for scientific investigations, resource management, asset management, archaeology, environmental impact assessment, urban planning, cartography, criminology, geographic history, marketing, logistics, Prospectivity Mapping, and other purposes. For example, GIS might allow emergency planners to easily calculate emergency response times in the event of a natural disaster, GIS might be used to find wetlands that need protection from pollution, or GIS can be used by a company to site a new business location to take advantage of a previously under-served market.

## **Technology Used**

Databases, GPRS, J2ME programming

## **SOFTWARE SPECIFICATION**

- ◆ Front end : Java / J2ME
- ◆ Back end : My SQL
- ◆ Operating system : LINUX
- ◆ IDE : Net beans

## **HARDWARE SPECIFICATION**

- ◆ Processor : Pentium IV OR Above
- ◆ Primary Memory : 256 MB RAM
- ◆ Storage : 40 GB Hard Disk
- ◆ Display : VGA Color Monitor
- ◆ Key Board : Windows compatible
- ◆ Mouse : Windows compatible
- ◆ Mobile : GPRS Enabled